

XTe
arquitectura · diseño

P O R T F O L I O

Leo Machicao Barrionuevo
Hernando Terrazas Silva
Rafael Valenzuela Barón
Enzo Vignolo Quiroz
Francesco Soppelsa
Iñigo Gómez Arribillaga

About Us

We are a multinational team of architects based in Barcelona and more than 15 years of professional experience in different countries. A team of architects with different pathways. Professional knowledgeable in all areas: technical, artistic, business and teaching.

A professional team with presence in Latin America and Europe, which is shaping their proposed architecture considering that there are many ways, many possibilities, many environments, many rules and many cultures consider... but always with the people and their well-being as objective and motive.

Professional field

With all the experience, individually and collectively, XTe develop our activities cover the whole field of design, from planning and urbanism, to the architectural and interior design, from the domain graphic arts as one of the pillars on which we support our creative work.

In addition, our real links with different countries and cultures allow us to enhance and adapt our proposals, coming on success at each site, every environment, every situation, every culture, every community, available resources, maintaining the essence of our projects with originality and creative resource.

Our experience

Having worked in many cities and countries has revealed their resources as much as value, respect and admire their cultural and technical qualities. On the other hand, working with the latest technical resources available makes the most advanced tools to unleash your creativity.

XTe TEAM

Leo Machicao Barrionuevo

Lima, Perú, 1965. Architect (1992), FAUA-UNI - Perú. PhD Studies (1999), ETSAB-UPC. Barcelona. Master Studies (2000), ETSAB-UPC. Barcelona. Lived in Barcelona since 1996.

Hernando Terrazas Silva

Chihuahua, México, 1976. Architect (2000), UACJ. – México. Master Studies (2003), Universitat Ramon Llull – La Salle. Barcelona. Lived in Barcelona since 2002.

Rafael Valenzuela Barón

Bogotá, Colombia - 1974. Architect (1997), UNC. – Colombia. Graduate Studies (2001), Universidad de los Andes, Bogotá. Master Studies (2003), Universitat Ramon Llull – La Salle. Barcelona. Postgraduate Studies (2005), ETSAB-UPC. Barcelona. Lived in Barcelona since 2002

Enzo Vignolo Quiroz

Santiago de Chile, 1967. Architect (1993), FAU – UC de Chile – Chile. PhD Studies (1998), ETSAB-UPC. Barcelona. Lived in Barcelona since 1996.

Francesco Soppelsa

Vico Equense, Italia, 1967. Architect (1997), Università degli Studi di Napoli Federico II – Italia. PhD Studies (2002), ETSAB-UPC. Barcelona. Lived in Barcelona since 1999.

Iñigo Gómez Arribillaga

Andoain, Guipuzcoa, 1971. Architect (1999), UPV/EHU San Sebastián. – Spain. Master Studies (2005), Universitat Ramon Llull – La Salle. Barcelona. Lived in Barcelona since 2004.

PROJECT **FEMAP MEDIC CENTER**

TYPOLOGY HEALTH INSTITUTION

SURFACE 30.000,00 sqm

SITUATION CIUDAD JUÁREZ, MEXICO

YEAR 2011



PROJECT **CANACINTRA BUSSINESS SCHOOL**

TYPOLOGY EDUCATION FACILITIES

SURFACE 1.692,00 sqm

SITUATION CHIHUAHUA, MÉXICO

YEAR 2012



PROJECT **FECHAC HEADQUARTES BUILDING**

TYPOLOGY INSTITUTIONAL

SURFACE 1.500,00 sqm

SITUATION CD. JUÁREZ, CHIH., MEXICO

YEAR 2010



PROJECT **HOTEL AT THE CITY OF MUSIC**

TYPOLOGY HOTEL FACILITIES

SURFACE 5.200,00 SQM

SITUATION VILAFRANCA DE LOS BARROS, SPAIN

YEAR 2009



PROJECT **ES MOLINAR - DAY CENTER & RETIREMENT DWELLING**

TYPOLOGY RETIREMENT HOME

SURFACE 8.400,00 SQM

SITUATION ALMA DE MALLORCA, SPAIN

YEAR 2009



PROJECT **SDOKU - SOCIAL DWELLING**

TYPOLOGY DWELLING

SURFACE 630,00 SQM

SITUATION MADRID, SPAIN

YEAR 2006



PROJECT REORDENAMIENTO URBANO EJE OESTE

TYPOLOGY URBAN PLANNING

SURFACE 145.250,00 SQM

SITUATION TESALÓNICA, GREECE

YEAR 1997



PROJECT DWELLING ON VALLHONRAT STREET

TYPOLOGY HOUSE RESTORATION

SURFACE 85,00 SQM + 30,00 SQM TERRECE

SITUATION BARCELONA, SPAIN

YEAR 2009



PROJECT CONZAC SHOPPING MALL

TYPOLOGY COMMERCIAL

SURFACE 24.830,00 SQM

SITUATION LIMA, PERÚ

YEAR 2010



PROJECT ARENALES BUILDING COMPLEX

TYPOLOGY DWELLING

SURFACE 11.642,00 SQM

SITUATION LIMA, PERÚ

YEAR 2010



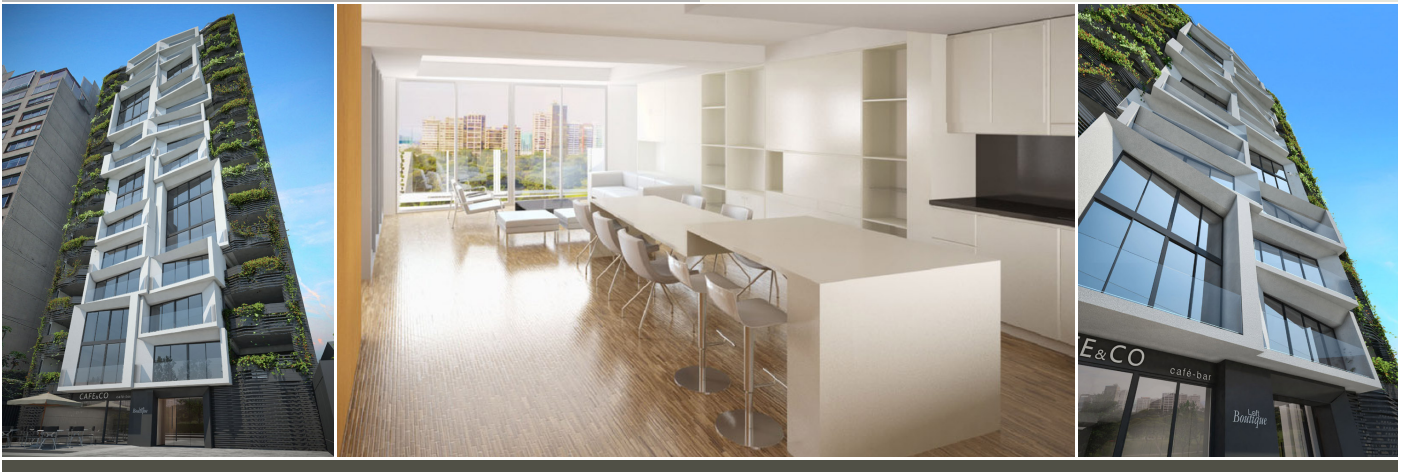
PROJECT LOFT BOUTIQUE BOULDING COMPLEX

TYPOLOGY DWELLING

SURFACE 7.400,00 SQM

SITUATION LIMA, PERÚ

YEAR 2011



PROJECT UTEC - UNIVERSITY CAMPUS

TYPOLOGY EDUCATIONAL FACILITIES

SURFACE 24.830,00 SQM

SITUATION LIMA, PERÚ

YEAR 2011



PROJECT **B.O. ATIC - L'EIXAMPLE**

TYPOLOGY HOUSE RESTORATION

SITUATION BARCELONA, SPAIN

SURFACE 180,00 SQM

YEAR 2010



PROJECT **DWELLING ON RAMBLA PRIM STREET**

TYPOLOGY HOUSE RESTORATION

SITUATION BARCELONA, SPAIN

SURFACE 85,00 SQM

YEAR 2010



PROJECT **DWELLING ON ALAVA STREET**

TYPOLOGY HOUSE RESTORATION

SITUATION BARCELONA, SPAIN

SURFACE 75,00 SQM

YEAR 2007



PROJECT **ATENEU DE LA FARINERA**

TYPOLOGY CULTURAL INSTITUTION

SITUATION BARCELONA, SPAIN

SURFACE 750,00 SQM

YEAR 2006



in collaboration with: OCTABIO MESTRE

PROJECT **PINEDA BEACH HOUSE**

TYPOLOGY DWELLING

SITUATION PINEDA DE MAR, SPAIN

SURFACE 250,00 SQM

YEAR 2007



in collaboration with: OCTABIO MESTRE

PROJECT **OLIVÉ GUMÀ CLINIC**

TYPOLOGY HEALTH INSTITUTION

SITUATION BARCELONA, SPAIN

SURFACE 20.000,00 SQM

YEAR 2009



in collaboration with: OCTABIO MESTRE AND COSTASERRA ARQS

PROJECT DWELLING BANDEAUX

TYPOLOGY DWELLING

SITUATION COMA-RUGA, SPAIN

SURFACE 175.509,00 SQM

YEAR 2006



en colaboración con: OCTABIO MESTRE

PROJECT URBAN DEVELOPMENT ON CALAHUERTA

TYPOLOGY URBAN PLANNING / DWELLING

SITUATION CALAHORRA, SPAIN

SURFACE 175.509,00 SQM

YEAR 2007



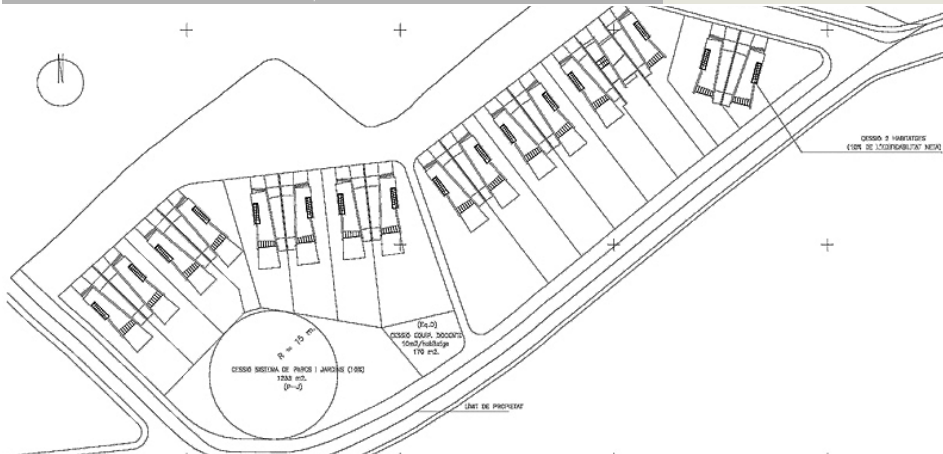
PROJECT URBAN PLANNING HOUSING

TYPOLOGY URBAN PLANNING

SITUATION CERVIÀ DE TER, SPAIN

SURFACE 2.000,00 SQM

YEAR 2000



PROJECT **FLOR D'AIGUA" RESIDENTIAL & COMMERCIAL**

TYPOLOGY DWELLING / COMMERCIAL

SURFACE 7.000,00 SQM

SITUATION FIGUERES, SPAIN

YEAR 2006



in collaboration with: SOB ARQUITECTOS

PROJECT **PARC DE LES AIGÜES ELEMENTARY SCHOOL**

TYPOLOGY EDUCATIONAL FACILITIES

SURFACE 3.600,00 SQM

SITUATION FIGUERES, SPAIN

YEAR 2009



in collaboration with: SOB ARQUITECTOS

PROJECT **ITACA ELEMENTARY SCHOOL**

TYPOLOGY EDUCATIONAL FACILITIES

SURFACE 3.292,00 SQM

SITUATION MANRESA, SPAIN

YEAR 2009



in collaboration with: SOB ARQUITECTOS

PROJECT **EIXAMPLE SQUARE**

TYPOLOGY URBAN DESIGN

SITUATION BARCELONA, SPAIN

SURFACE 2.510,00 SQM

YEAR 2007



in collaboration with: SOB ARQUITECTOS

PROJECT **"PORT VALL BALÍS" RESIDENTIAL**

TYPOLOGY DWELLING

SITUATION SANT ANDREU DE LLAVANERES, SPAIN

SURFACE 19.540,00 SQM

YEAR 2006



in collaboration with: SOB ARQUITECTOS

PROJECT **ACACIA - RESIDENTIAL SENIOR HOTEL**

TYPOLOGY HOTEL FACILITIES

SITUATION SANT PERE DE RIBES, SPAIN

SURFACE 15.750,00 SQM

YEAR 2009



in collaboration with: SOB ARQUITECTOS

PROJECT **URBAN DEVELOPMENT PLAN "RACÓ BLAU"**

TYPOLOGY URBAN PLANNING

SITUATION BLANES, SPAIN

SURFACE 99.450,00 sqm

YEAR 2008



in collaboration with: SOB ARQUITECTOS

PROJECT **DWELLING ON CREU COBERTA**

TYPOLOGY DWELLING

SITUATION BARCELONA, SPAIN

SURFACE 7.890,00 sqm

YEAR 2007



in collaboration with: SOB ARQUITECTOS

PROJECT **SAGUNTO RESIDENTIAL COMPLEX**

TYPOLOGY DWELLING

SITUATION SAGUNTO, SPAIN

SURFACE 31.290,00 sqm

YEAR 2007



in collaboration with: SOB ARQUITECTOS

PROJECT **K-LiGRAM – PUBLIC SQUARE & EDUCATION CENTER**

TYPOLOGY EDUCATION FACILITIES

SURFACE 2.600,00 sqm

SITUATION TORRELAVEGA, SPAIN

YEAR 2009



in collaboration with: SOB ARQUITECTOS

PROJECT **CONTEMPORARY ARCHITECTURE FUNDATION**

TYPOLOGY CULTURAL FACILITIES

SURFACE 1.845,00 sqm

SITUATION CÓRDOBA, SPAIN

YEAR 2009



in collaboration with: SOB ARQUITECTOS

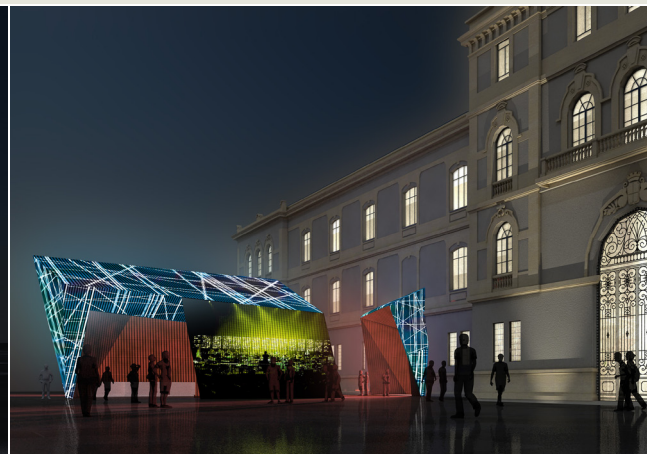
PROJECT **| + | = T - iINTERNATIONAL CONTEMPORARY CULTURE CENTER - TABAKALERA**

TYPOLOGY CULTURAL FACILITIES

SURFACE 26.300,00 sqm

SITUATION DONOSTIA - SAN SEBASTIÁN, SPAIN

YEAR 2008



in collaboration with: SOB ARQUITECTOS

PROJECT **MONTCADA COMMERCIAL & BUSINESS COMPLEX**

TYPOLOGY **MONTCADA I REIXAC, SPAIN**

SURFACE **126.040,00 sqm**

SITUATION **OFFICE & INDUSTRIAL**

YEAR **2008**



in collaboration with: SOB ARQUITECTOS

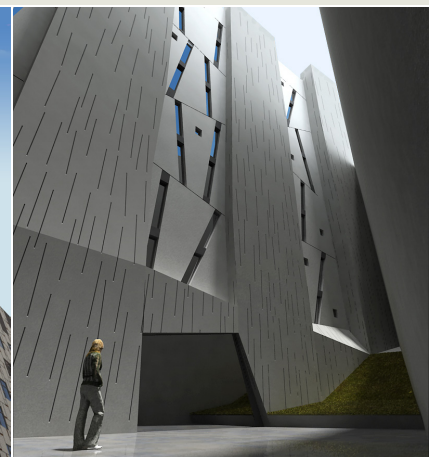
PROJECT **HOTEL DE LA LUZ - 4 STAR HOTEL ON DIPUTACION STREET**

TYPOLOGY **HOTEL**

SURFACE **6.500,00**

SITUATION **BARCELONA, SPAIN**

YEAR **2008**



in collaboration with: SOB ARQUITECTOS

PROJECT **RESIDENTIAL & COMMERCIAL COMPLEX ON "EL PUIG"**

TYPOLOGY **DWELLING / COMMERCIAL**

SURFACE **10.060,00 sqm**

SITUATION **VALENCIA, SPAIN**

YEAR **2008**



in collaboration with: SOB ARQUITECTOS

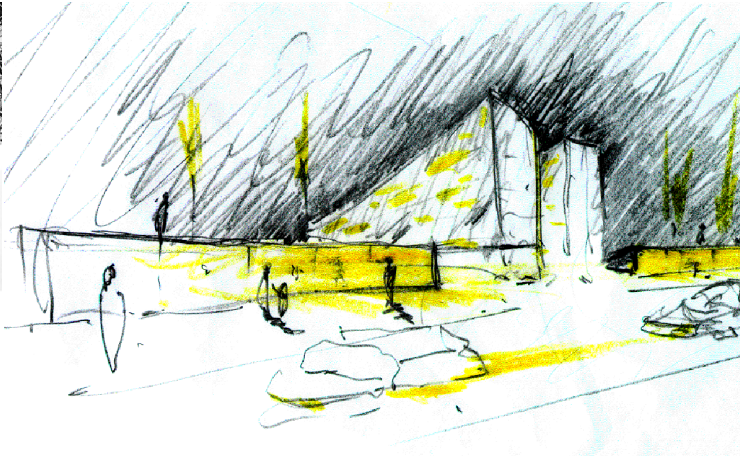
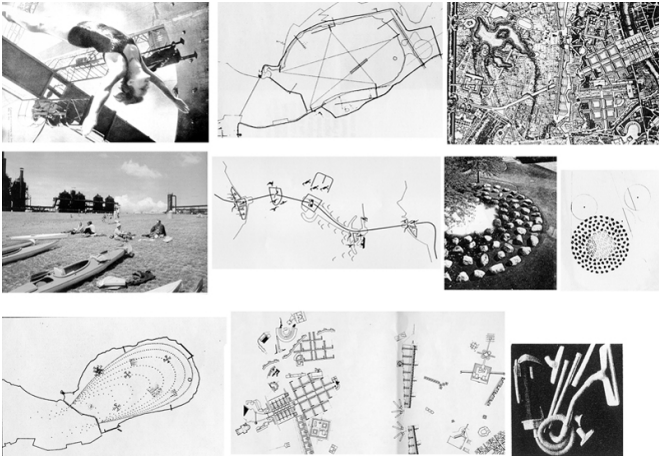
PROJECT **SOCIAL DWELLING AT THE COAST**

TYPOLOGY URBAN PLANNING

SURFACE 82.620,00 sqm

SITUATION ROVINJ, CROATIA

YEAR 1999



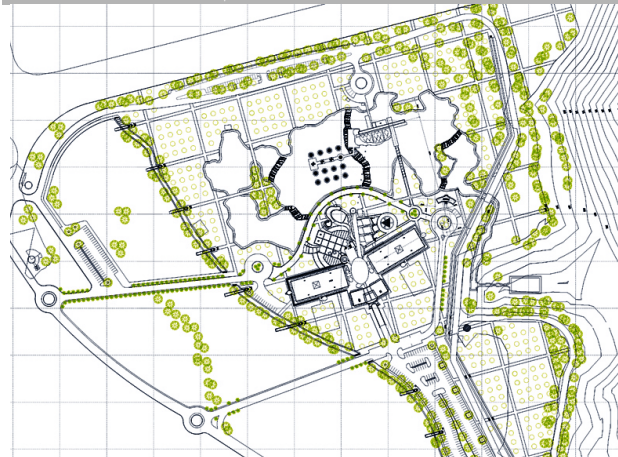
PROJECT **"SEDAPAL" MASTER PLAN**

TYPOLOGY URBAN PLANNING

SURFACE 80.250,00 sqm

SITUATION LIMA, PERU

YEAR 1996



PROJECT **"SEDAPAL" HEADQUARTERS**

TYPOLOGY INSTITUTIONAL

SURFACE 18.750,00 sqm

SITUATION LIMA, PERU

YEAR 2006





arquitectura · diseño

BARCELONA

Calle Lope de Vega 47, 5º 4º · 08005 · Barcelona
+34.93.3535690 · +34.626.386.282
xte-ad@xtead.com · www.xtead.com